



KINDERGARTEN INFORMATION

Lake Gwelup Primary School



LAKE GWELUP
PRIMARY SCHOOL
INTEGRITY & EXCELLENCE

WELCOME TO KINDERGARTEN AT LAKE GWELUP



Starting kindergarten is a major milestone for you and your child and the start of a new phase of life for you both. This booklet will help make the kindergarten experience at Lake Gwelup Primary School as smooth and enjoyable as possible.

We recognise that each and every child is unique and comes to the school environment with their own strengths and interests.

The teaching and learning environment in our kindergarten has a balance between play-based learning (free and intentional) and the explicit teaching of literacy and numeracy. We place high value on nurturing the curiosity and sense of wonderment in early childhood and endeavour to make school a fun and inviting environment for young learners.

Students will engage with a range of age-appropriate and motivating topics, with educators following the children's interests with purpose in their planning. All supported through child-centred, hands-on learning experiences based on developmental and individual needs of students.

It is widely recognised that a powerful way young children learn is through play. Play is both active and interactive and it fosters children learning together. Children use play to develop their relationships, to experiment, imagine, create, practise, problem solve and role play.

Your child and family are very important new members of the school community - welcome to Lake Gwelup! This is the beginning of a wonderful journey where teachers and parents work as partners to deliver excellence in education.





TABLE OF CONTENTS

| | |
|---|--------------------------------|
| 1 | School Information |
| 2 | Our Curriculum |
| 3 | Kindergarten Activities |
| 4 | Getting Ready for Kindergarten |
| 5 | What to Pack |
| 6 | Communication |
| 7 | Attendance and Medical |
| 8 | School Dates |
| 9 | Getting Involved |



**LAKE GWELUP
PRIMARY SCHOOL**
INTEGRITY & EXCELLENCE

SCHOOL INFORMATION

Adam Marchant
Principal

Jessica Nicol
Deputy
Principal

Rebecca Morgan
Deputy
Principal

Jodi Piercey
Deputy
Principal



 **08 9278 0400**

 **Lakegwelup.ps@education.wa.edu.au**

 **lakegwelupps.wa.edu.au**

 **59 Porter
Street,
Gwelup 6018**

Our School Day

8:40 Classrooms
open

8:50
School day begins

10:20 Morning
recess and play

12:30 Lunch
and play

3:00
School day finishes

Emu Group Room 2

Monday Tuesday

Wednesday (alternate weeks)



Koala Group Room 2

Thursday Friday

Wednesday (alternate weeks)



Echidnas Group Room 1

Monday Tuesday

Wednesday (alternate weeks)



OUR CURRICULUM

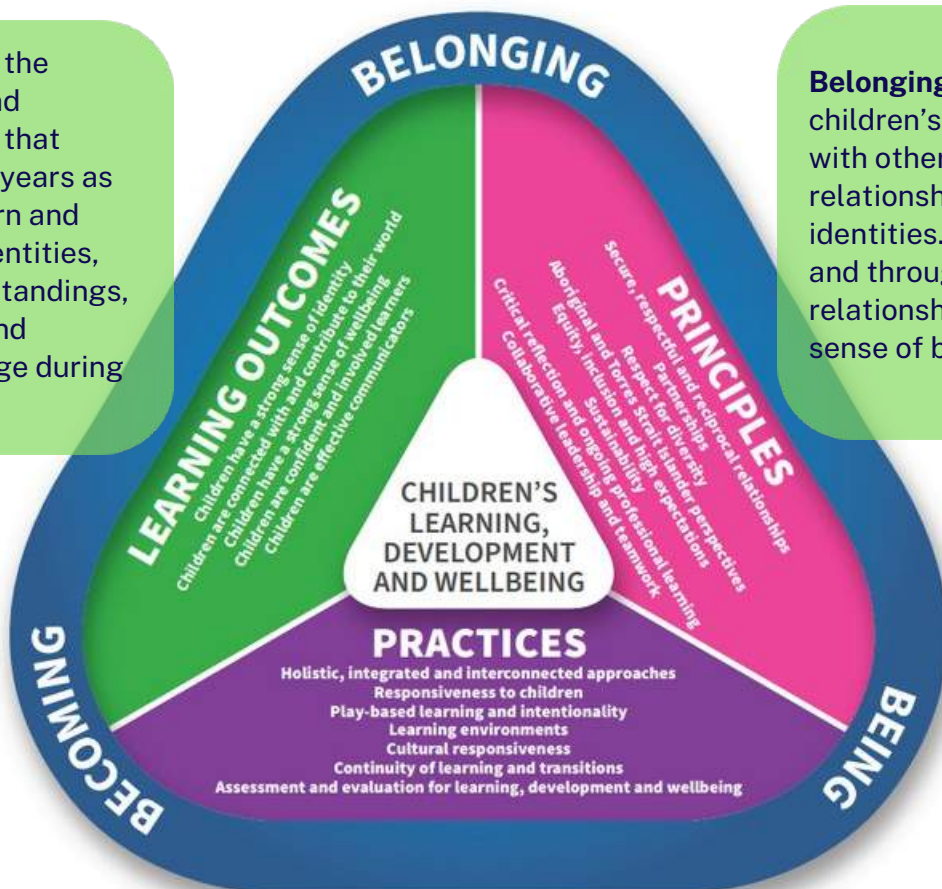


In the early childhood setting, all interactions, experiences, activities, routines and events occur in an environment designed to foster learning and development. The Early Years Learning Framework (EYLF), National Quality Standards (NQS) and the Kindergarten Guidelines underpin our kindergarten program.

All children enter kindergarten with different skills and experiences.

The EYLF and the Australian Curriculum are complementary and articulate a pathway of learning. These both recognise that personal and social competence, health and well-being and literacy and numeracy should be core focused areas for young children's learning. Fundamental to the Framework is a view of children's lives as characterised by belonging, being and becoming.

Becoming reflects the process of rapid and significant change that occurs in the early years as young children learn and grow. Children's identities, knowledge, understandings, capacities, skills and relationships change during childhood.



Belonging acknowledges children's interdependence with others and the basis of relationships in defining identities. In early childhood, and throughout life, relationships are crucial to a sense of belonging.

Being recognises the significance of the here and now in children's lives. It is about the present and them knowing themselves, building and maintaining relationships with others, engaging with life's joys and complexities, and meeting challenges in everyday life.

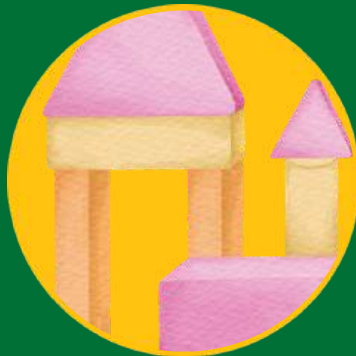


Kindergarten Activities

Each day, children are exposed to a range of inviting activities to foster different learning styles, interests and strengths.



Painting, drawing, cutting and pasting



Puzzles and construction play



Exploring books, listening to stories and storytelling



Talking and listening



Dressing up and imaginative play



Singing, dancing to and playing music



Climbing, balancing, running and jumping



Playing with clay, play dough, sand and water



Opportunities to share with other children and develop independence

GETTING READY FOR KINDERGARTEN

There's a lot you can do to prepare your child, and yourself, for kindergarten. The first day of school can be an emotional time for parents and children. The more you can help your child to become familiar with the layout of the school and what they need to do before day one, the less overwhelmed they are likely to feel.



Before school starts

The **summer holidays** before the start of the school year are a great time to:

- show your child **where the school is** and talk about how you will get there
- arrange **playtimes with other families** whose children will be going to Lake Gwelup- it helps if your child knows another child at school
- **practise** the things your child will need to do to **get ready for school** (unzipping and zipping up bag, opening and closing lunchbox, putting lunchbox into your bag, putting shoes and socks on)
- **be positive about starting** school and enjoy your child's excitement! Try to avoid fearful or overly emotional conversations around your child not being with you.



The night before kindergarten starts

Lay out your child's clothes, shoes and socks. Establish a sleep routine. You may find your child needs more sleep when they start kindergarten. Try to establish a nightly routine with a set bedtime to ensure your child is well rested.



The first days of kindergarten

Help your child to pack their school bag with a crunch and sip snack, water bottle, lunch and a hat. Place a change of clothes with a spare pair of underpants in a plastic bag. Let your child know these clothes are in the bag in case of any accidents. Put sunscreen on your child in the morning if it is needed. At the end of the day talk to your child about what happened at kindergarten and remind them how proud you are of them starting school!



Dressing for school

We have a school uniform for all students from Kindergarten to Year 6. Uniforms can be purchased through JFE: Jenny Franklin Enterprises in Osborne Park. A clearly labelled broad brimmed hat is to be supplied. We encourage kindergarten children to wear the school uniform hat as it complies with our sun-safe policy. Look for easy fasteners when choosing shoes and ensure school bag is large enough to fit spare clothes, lunchbox, crunch 'n sip containers, and any of your child's artwork/creations. The school logo bags are a great choice for a large sized bag! Encourage your child to dress themselves so they will be able to **manage** their jumpers and shoes at kindergarten.

JFE x Uniform Concepts

Phone: 9270 4646

Email: osbornepark@uniformconcepts.au

Website: <https://uniformconcepts.au>

Address: 85 Guthrie St, Unit 1 Osborne Park, WA

MON-THURS 9am-5pm FRI 9am-12pm



WHAT TO PACK FOR KINDERGARTEN



Please ensure all items are **clearly labelled** and your child is familiar with their belongings before they begin kindergarten.



A **large school bag**, make sure it is big enough to hold everything listed



a **spare change of clothes** (including top, bottom and underwear)



a **lunchbox** with a variety of foods your child is familiar eating



a **sun smart wide brim school hat**



crunch and sip snack in a separate container your child can open independently (labelled)



a **water bottle** (labelled)

COMMUNICATION

Compass

Our school's main communication platform is Compass. You can input absences for your child, view details of upcoming events on the calendar and access school documentation.

Your class teacher and the school will use this platform to send important information and newsletters via the News Feed.

Invitations to join Compass will be sent at the start of the school year.

If you are already connected, your Kindergarten child will automatically populate at the start of Term 1, 2026.



Seesaw

Seesaw is your child's digital portfolio and showcases work for parents to view. Please ensure you have downloaded the app prior to your child starting kindergarten. You will gain full access to Seesaw at the commencement of the school year. Please complete your permission form using the QR code in the pack.



Email

Please **email** your child's classroom teacher to discuss your child's progress, achievements or any queries you have. Email can also be used to book meeting times with the teacher. You will receive the email address for your child's teacher in the first week of the school term.



Parent Information Sessions

LGPS hosts **Parent Information Sessions** for all Kindy and Pre-Primary classes across the school within the first few weeks of Term 1. These sessions allow teachers to formally introduce themselves and provide class specific information.



Lake Gwelup PS Website

Our school website provides key information about Lake Gwelup PS for parents, carers, and the wider community. It includes essential details such as school information, parent resources, business plans, annual reports and school policies. The website serves as a central place to learn more about how our school operates, its history, our educational approach, and the plans that guide our ongoing development..



Facebook

Our school's Facebook page allows our community to keep up to date with activities through a medium preferred by many. Please feel free to give our school a follow. Lake Gwelup Primary School.



Connect

Reports are published through **Connect** at the end of Semester 1 and 2.





ATTENDANCE

Once enrolled in kindergarten, it is important that children develop regular attendance habits. Going to kindergarten, Pre-primary and Year 1 each day gives children the best start to school. If your child attends school regularly in the early years, they are more likely to continue this in the future. Teachers plan programs sequentially, so when children don't attend school regularly, they miss out on important information, learning and skills. Children who are regularly absent risk missing out on the basic building blocks in core learning areas. If your child is absent from school please use the Compass app to record their reason for absence.



ILLNESS

Please keep your child away from school and see your doctor if your child has:

- a fever of 38°C or above
- vomiting or diarrhoea (within the last 48 hours)
- cold or flu symptoms
- rashes of unknown origin
- a persistent cough



ALLERGIES

If your child has an allergy you must alert administration upon enrolment and advise the class teacher. An allergy action plan which has been developed by your doctor, along with your child's medication, including a labelled auto-injector (e.g. EpiPen) if prescribed, must be provided to the school. We ask parents not to send foods containing nuts, sesame seeds or shellfish to school to prevent other children being put at serious health risk.



MEDICATION

Sometimes children need to have prescribed medications during the day and, whilst it is preferable for parents to administer them, we are able to do so when given adequate information and a completed and signed Administration of Medication Form beforehand. The medication must be clearly labelled with the child's name and provided in packaging from the pharmacy or the manufacturer



IMMUNISATIONS

Children enrolling in kindergarten must be up to date with all the scheduled immunisations for their age to be able to attend school. You are required to show your child's Australian Immunisation Register (AIR) Immunisation History Statement as proof of immunisation. From Pre-Primary onwards, if an outbreak of an infectious disease occurs at the school, parents of children who do not have an up to date immunisation status will be asked to keep them at home, until the danger has passed. You can check your child's immunisation status online: www.medicareaustralia.gov.au/public/onlineservices/ If your child has contracted a communicable disease such as chicken pox or measles, the school should be notified as soon as possible after the diagnosis has been confirmed.



SCHOOL HEALTH NURSE

The school health nurse will visit our school during the year. If you have provided consent (by signing the form), the nurse will check your child's vision, hearing, growth, teeth and general health. You will get the results soon after the nurse has completed it.





SCHOOL DATES 2026

| Term 1 | Term 2 | Term 3 | Term 4 |
|--|--|---|---|
| Monday 2 February - Thursday 2 April | Monday 20 April - Friday 3 July | Tuesday 21 July - Friday 25 September | Monday 12 October Thursday 17 th December |
| Holiday Break Friday 3 April - Sunday 19 April | Holiday Break Saturday 4 July - Sunday 19 July | Holiday Break Saturday 26 September - Sunday 11 October | Holiday Break Friday 18 December Sunday 31 January 27 |

Birthdays

We are very happy to celebrate your child's birthday at kindergarten and you are welcome to bring individual cupcakes, chocolates, lollipops or icy poles (depending on the weather) to share on your child's birthday. When catering for the class remember there will be at least twenty-two serves required and check with staff beforehand if there are any allergies or cultural needs to be catered for. If your child has an allergy you are welcome to provide a separate supply of safe treats for us to give your child when celebrating birthdays.



School Development Days 2026

Thurs 29 Jan & Fri 30 Jan

Friday 29 May

Monday 20 July

Friday 6 November

Students do not attend

Term Planner

A term planner will be distributed at the start of the school year with other important events and dates.



SCHOOL BOARD



We are an Independent Public School who sets our own strategic directions, have authority for day-to-day decision making and are in an ideal position to make decisions that best cater for our students. Parents and community members have an important and enhanced role in this initiative through the School Board. The School Board meets in the evenings, twice each term. Details of our current Board members are available on the school website. Opportunity to nominate for a position on the School Board will be in Term 1, 2026.



P&C

The Parents and Citizens' Association (P&C) at our school is involved in making decisions about the school and how it spends the funds it raises. At Lake Gwelup we are very fortunate to have a highly involved P&C who work closely with the school to plan fundraising and social events and assist in purchasing resources, supplementing programs and initiatives and beautifying our school grounds. All are welcome and encouraged to join our P&C.

You can nominate to be a P & C class representative at the beginning of the school year.



VOLUNTEERS

Children love to see their parents and carers at their school, whether helping out in the classroom, a school event or being involved in other ways. Research shows that students perform better at school when their parents or carers take an active interest in their school work. If you have special skills or hobbies you would like to share, let us know so you can help to enrich our program. We will set up a parent help roster in Term 2, as well as other opportunities for you to volunteer your time.

Parent volunteers must complete the Parent and Child Volunteer Declaration Form prior to commencing volunteer work.



The Y

The Y Lake Gwelup Outside School Hours Care (OSHC) provides before, after school and vacation care, 7:00am - 6:00pm for children aged 4 years and over from Kindergarten to Year 6. Enrolment costs are all inclusive of incursions, excursions, transportation, morning and afternoon tea. We have a team of qualified and passionate educators who are committed to providing a high quality and inclusive environment for all school aged children.

A step by step enrolment guide is shown on the Y website: <https://www.ymcawa.org.au/enrolment-form-oshc> or you can contact YMCA on 0410 229 137





Welcome Emus, Echidnas and Koalas 2026

Our Philosophy

Our approach blends **child-led exploration** with explicit teaching to support growth in language, numeracy, and social-emotional skills.

We **honour each child's sense of being** in the present, while supporting their journey of **becoming lifelong learners** who are confident, curious, and ready to engage with the world.

We aim to create a **supportive and inclusive community** where **every child feels a sense of belonging**.

We are **always open to communication** and value fostering **strong relationships** with families, children and the school community.

